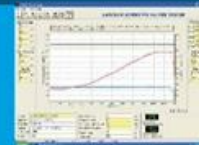


Filter Testers in full Conformity to the DIN Norm

Computerized Filter Tester



Fully computerized version with on board large capacity PC featuring a practical keyboard and mouse for convenience in entering all the test data. This version automatically calculates the filter test value.

**WE WERE FIRST IN THE WORLD
TO PRODUCE FILTER TESTERS**



Our filter test head with gear pump is designed specifically for easy cleaning where the melt flows in a straight line from extruder through gear pump all the way up to the filter. The filter is easily installed and removed with our quick clamping system

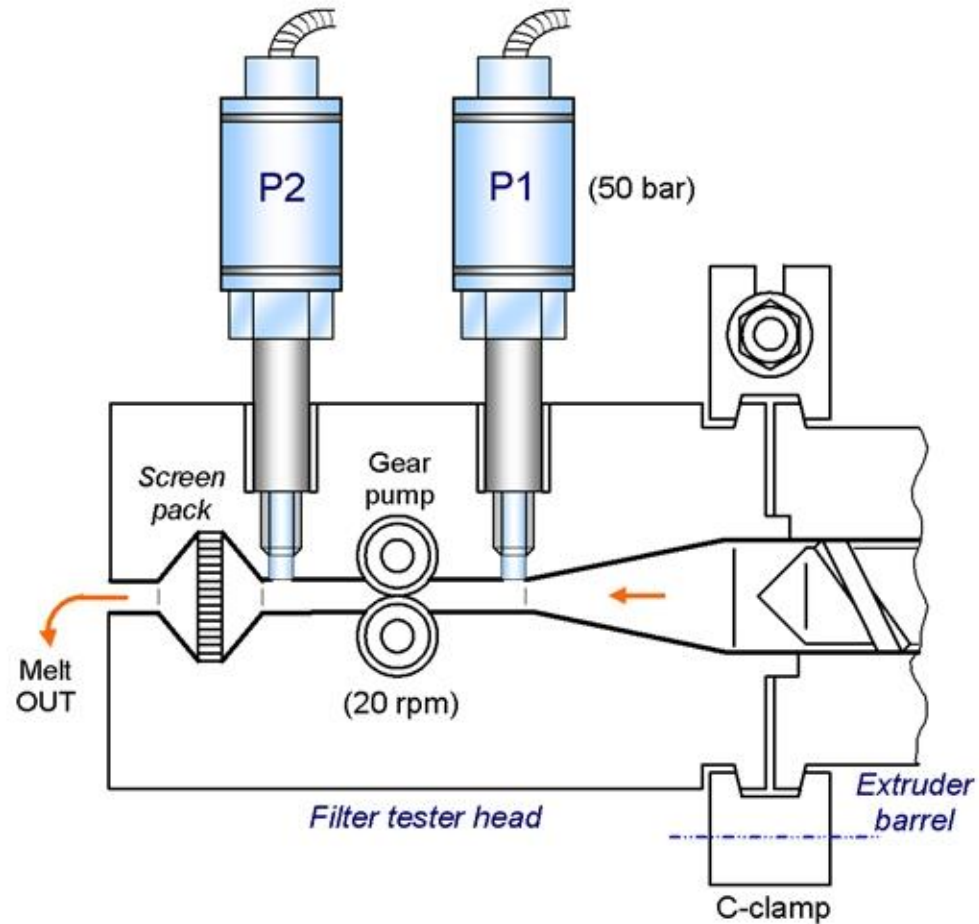
Filter Tester with Gear Pump for accurate quality testing and standardization of master batches and compounds.

Standard filter sizes from 40 down to 5 microns, as well as DIN sizes. Available for both our 20 and 25 mm extruders.



**New Compact Filter Tester type
with 20 mm extruder**

Labtech Filter Tester

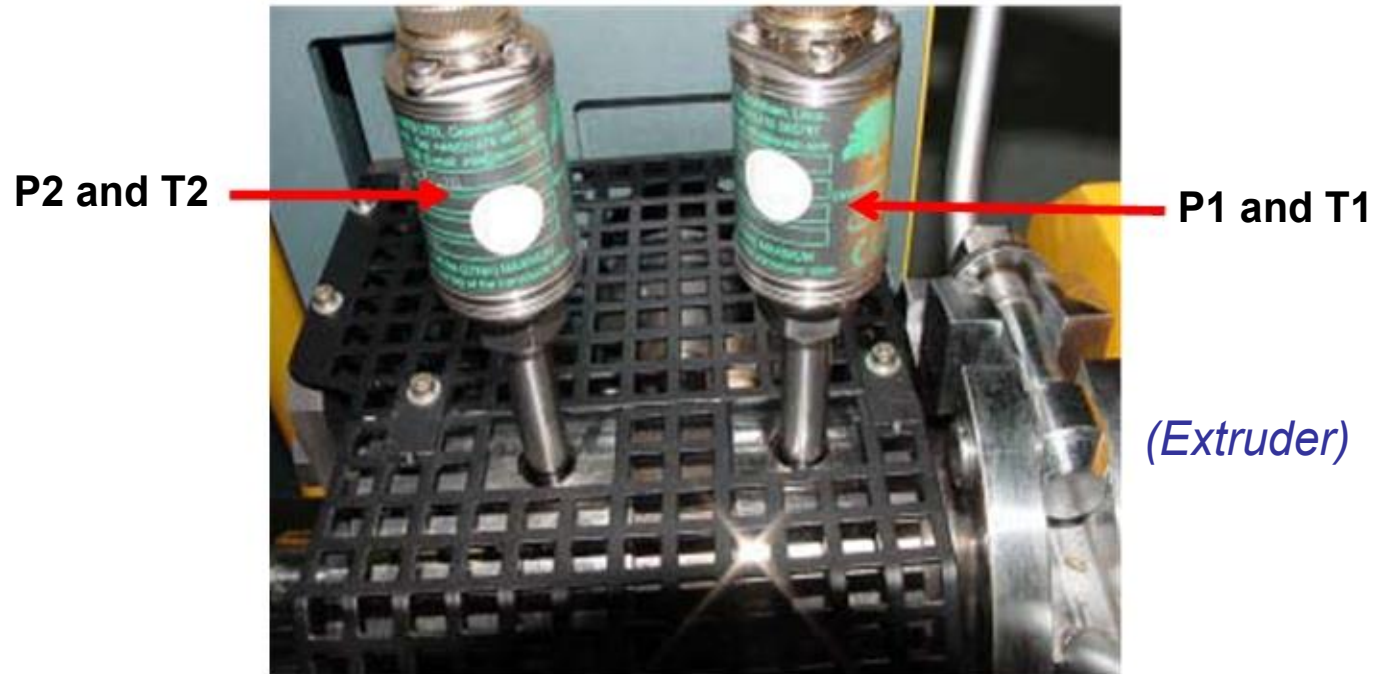


The test determines 'oversize' particles in a sample

The test is commonly used for QC on color masterbatches

Features of the Labtech Filter Tester

- Two pressure transducer/temperature monitoring instruments: P1 and T1 (before gear pump), and P2 and T2 (before screen pack),



- Screen pack size: 34 mm (for DIN standard) or 44 mm diameter 5
Screen pack sizes: μ , 10 μ , 15 μ , 25 μ , and 45 μ .
And 'screen packs 1, 2, and 3' for DIN standard

Labtech Filter Tester



Computerized Control of the Filter Test

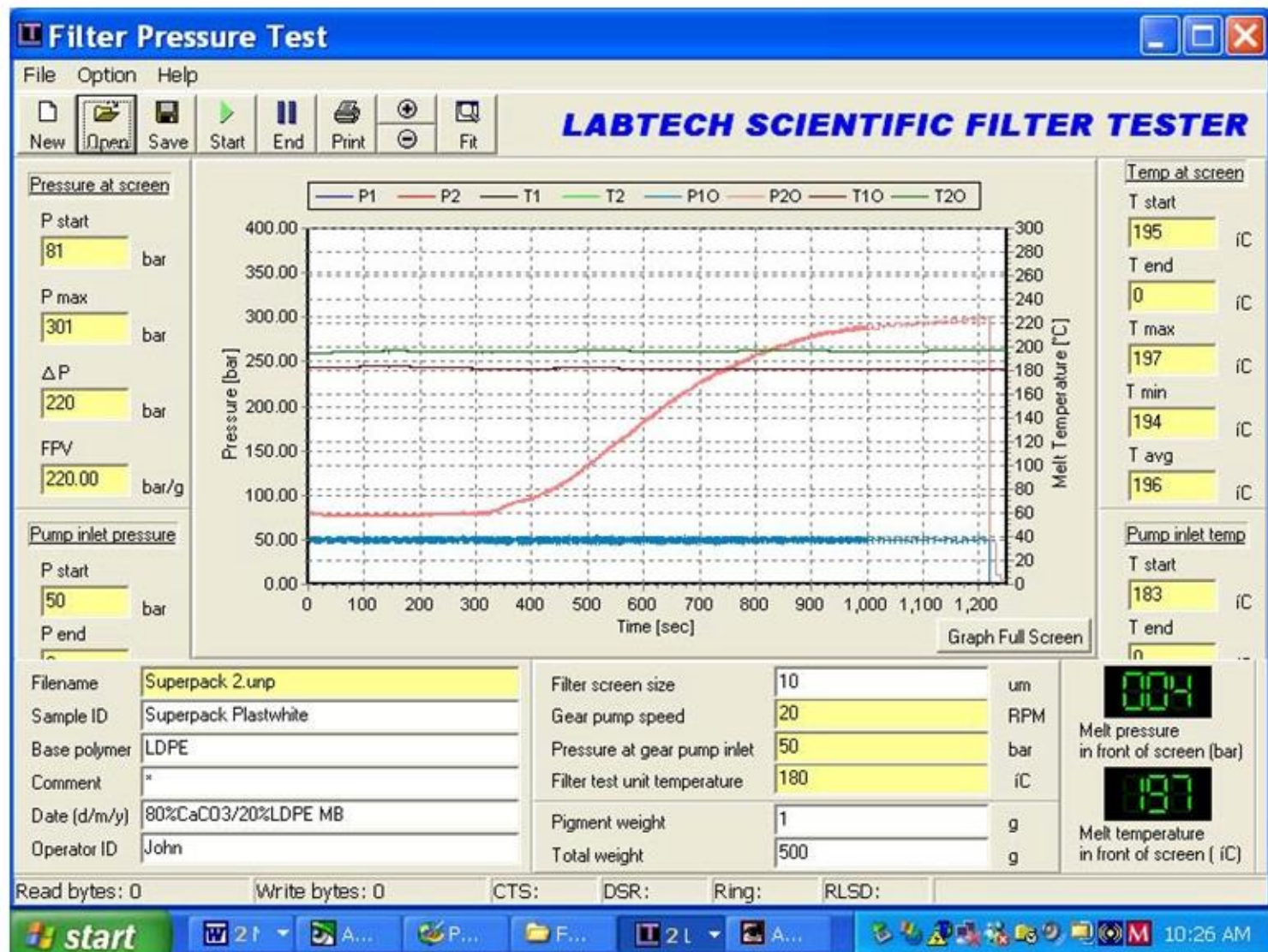
Panel for setting
the gear pump
speed and inlet
melt pressure

Temperature
controller for
the filter
tester head

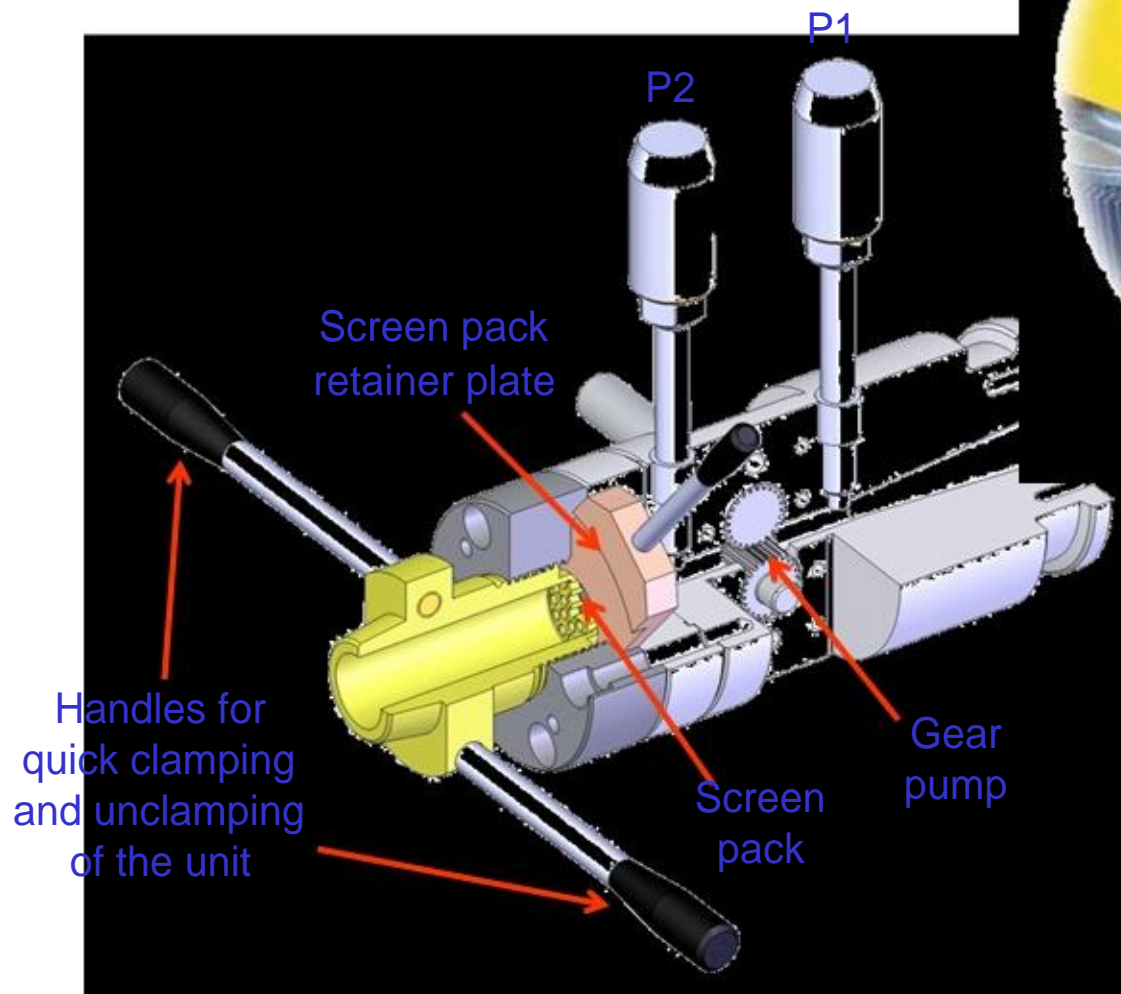
Real-time
plot of
graph
during the
test



Typical Computer Screen from a Filter Test



The Filter Tester Head



Running the Filter Test



Extruders used for the Filter Test:

1. The LBE20-30/P benchtop single-screw extruder

20 mm diameter screw
30:1 L/D
3.75:1 compression ratio
Plain screw
Non-vented barrel



For running the
Norm EN 13900-5
filter test

Extruders used for the Filter Test:

2. The LE25-30/C single-screw extruder Used with the LFT44-GP filter tester

Standard:

25 mm diameter screw

30:1 L/D

Screw has Maddock
mixing section and
pineapple mixing section
Non-vented barrel

Options:

Plain screw

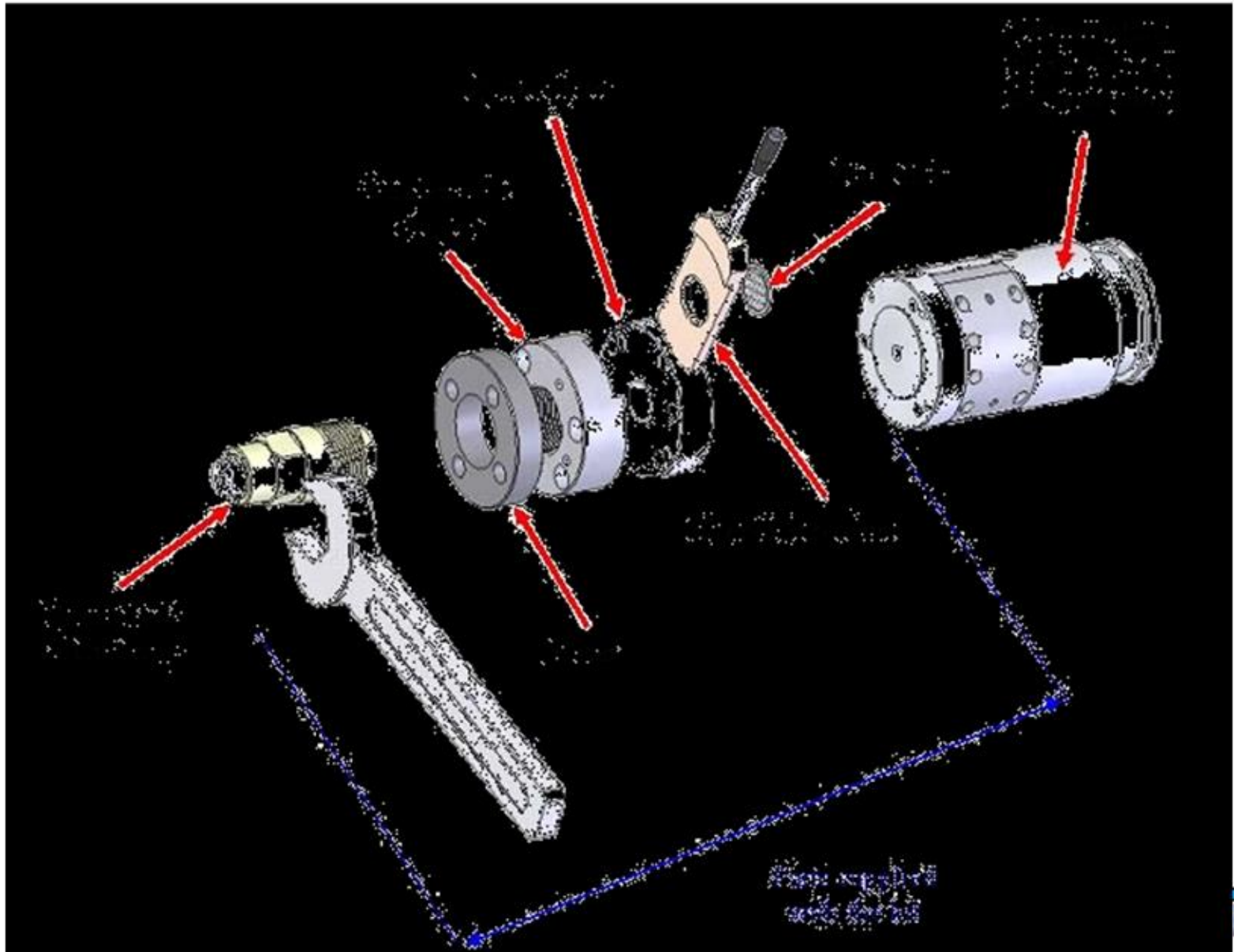
Modular mixing sections

Vented barrel

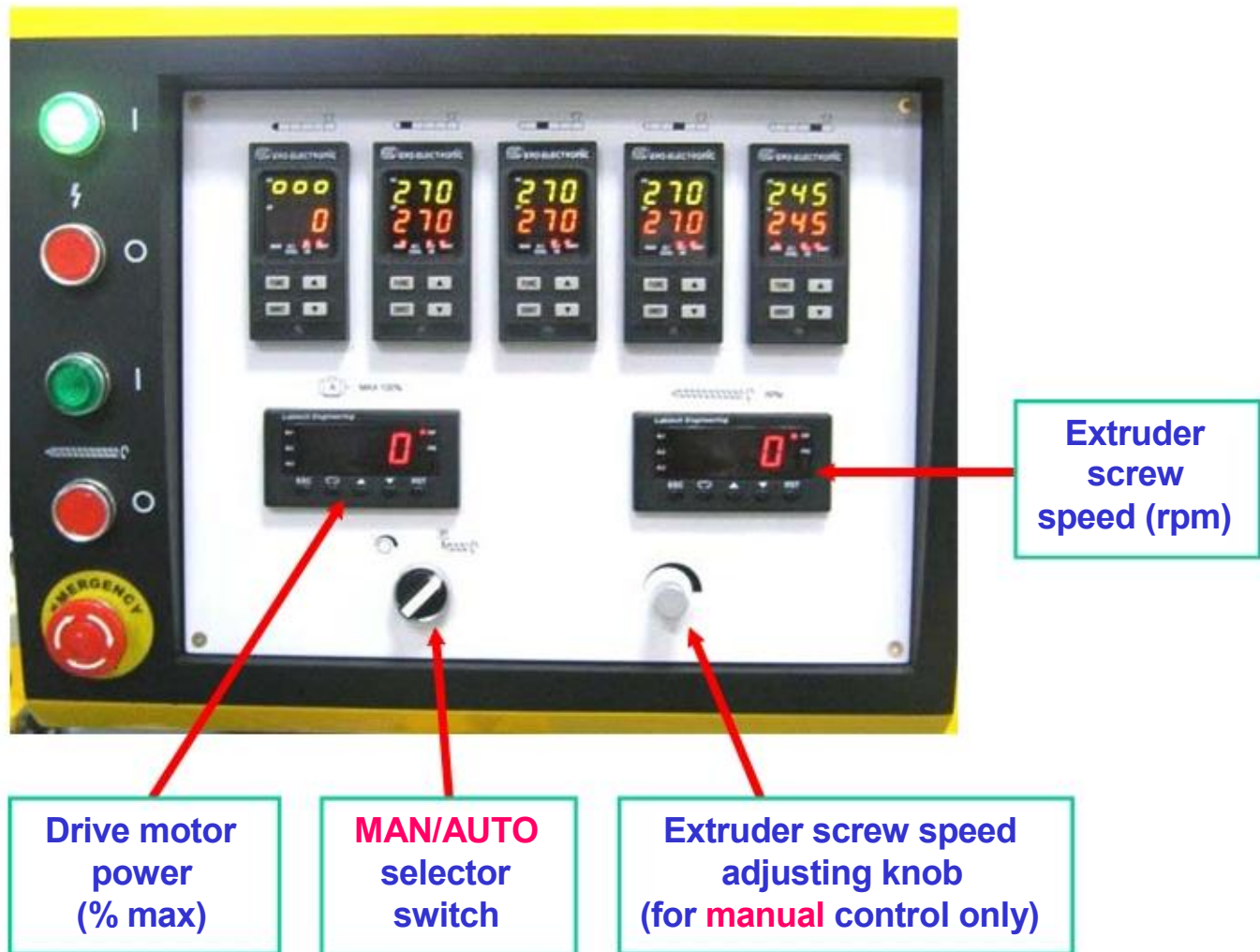
Can also be used for running the
DIN Norm EN 13900-5 filter test --
after converting the filter tester
head (using our conversion kit) for
using 34 mm dia screen packs



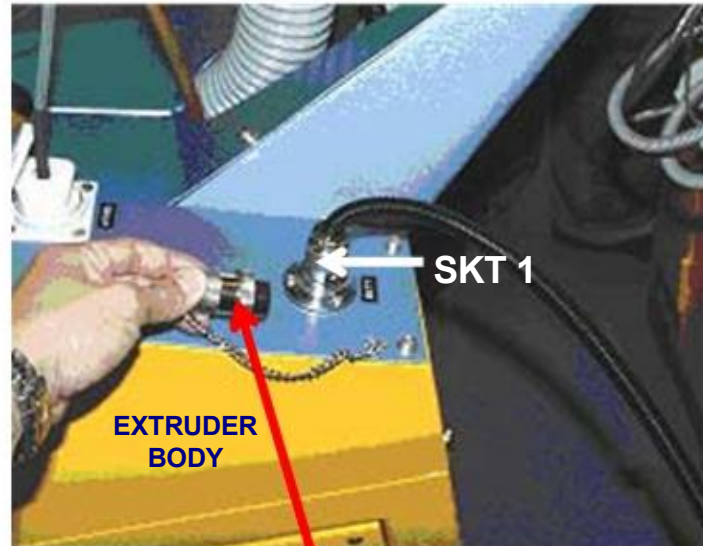
Conversion Kit to Convert the LFT44-GP Filter Tester to LFT34-GP for Testing According to DIN Norm EN13900-5



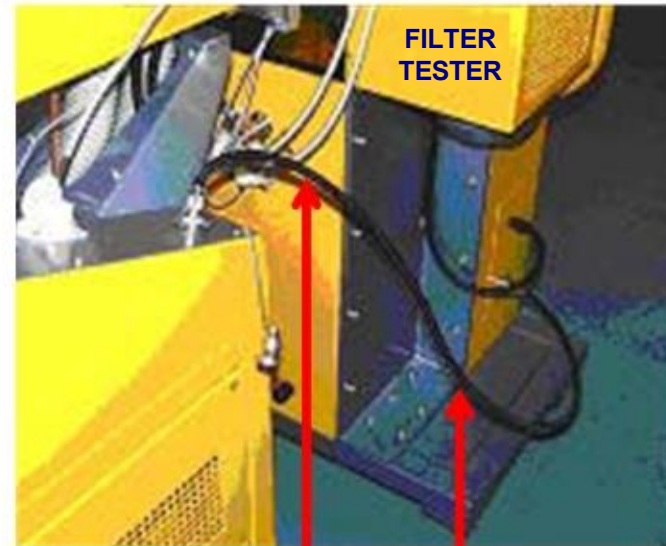
The LE25-30 Extruder Control Panel



- The filter tester unit is detachable from extruder (C-clamp) and portable. The extruder can be used for other downstream equipment.



Jump plug
(originally in SKT 1)



Signal cable from the filter
tester to extruder control unit

- Extruder has MAN and AUTO controls.
- Extruder is 20 mm or 25 mm, 30L/D, non-vented, plain screw.
- 44 mm-size filter tester can also be used for DIN EN 13900-5 test. Need to modify head with our conversion kit for 34 mm screen pack.

End of Filter Testers